

# FINANCIAL STATEMENTS

2008/2009 In-kind Contributions as of March 31/09

Agriculture and Agri-Food Canada - PFRA	\$ 7,500.00
Alberta Agriculture, Food and Rural Development	119,200.00
Alberta Environment	72,500.00
Alberta Environmental Farm Plan	1,200.00
Alberta Pork Producers	1,000.00
Alberta Sustainable Resource Development	2,250.00
Cardston County	11,500.00
Chinook Regional Health Authority	6,400.00
City of Lethbridge	8,500.00
Compton Petroleum Corporation	150.00
County of Lethbridge	2,750.00
County of Vulcan	200.00
Department of Fisheries & Oceans Canada	6,800.00
Ducks Unlimited	3,850.00
Members at Large	25,800.00
MULTISAR	6,100.00
Natural Resources Conservation Board	150.00
Nature Conservancy of Canada	4,200.00
Piikani Public Works	1,000.00
Shell Canada	150.00
Southern Alberta Group for the Environment (SAGE)	16,350.00
Southwest Alberta Conservation Partnership	6,000.00
St. Mary River Irrigation District	1,000.00
Taber Irrigation District	1,600.00
Town of Cardston	750.00
Town of Picture Butte	3,500.00
University of Lethbridge	3,550.00
Waterton Lakes National Park	300.00

Total \$ 314,250.00

2008/09 Cash Contributions as of March 31/09

Alberta Environment	\$ 231,100.00
Alberta Irrigation Projects Association	1,000.00
City of Lethbridge	24,507.60
County of Lethbridge	6,181.20
Individual donations	150.00
Leron Torrie Farms	50.00
Lethbridge Northern Irrigation District	5,000.00
Magrath Irrigation District	200.00
MD of Pincher Creek	992.70
MD of Ranchlands	250.00
MD of Taber	1,884.00
MD of Willow Creek	210.00
Pickering, Robert/Shirley	50.00
Raymond Irrigation District	1,234.68
Ronald Winter	50.00
St. Mary's River Irrigation District	4,990.89
Taber Irrigation District	2,302.95
Town of Cardston	1,073.40
Town of Coaldale	1,853.10
Town of Picture Butte	477.60
Town of Stavely	149.10
Village of Carmangay	50.00
Village of Cowley	65.70
Vulcan County	1,149.00

Total Revenue \$ 284,971.92

# BOARD OF DIRECTORS

The Oldman Watershed Council Board of Directors is comprised of 13 representatives from various organizations and 4 members at large. If there are any issues that you would like discussed at the meetings, contact Stephanie at stephanie@oldmanbasin.org at least two weeks prior to a meeting. The 2008/09 Board included the following members, each serving a 2-year term:



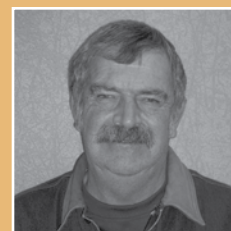
Anne Stevick  
Member at Large



Cheryl Dash  
Provincial Government



Cheryl Fujikawa  
Not-for-Profit Organization



Glen French  
Member at Large



Gerhardt Hartman  
Member at Large



Terry Kerkhoff  
Municipalities



Andy Hurly  
Academia



Lorne Fitch  
Member at Large



Bruce Konynebelt  
Agricultural Producers



Andrea Kalischuk  
Provincial Government



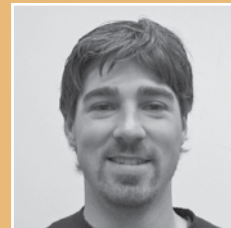
Barbara Lacey  
Municipalities



Shane Petry  
Federal Government



Ron Renwick  
Irrigation Sector



Sean Robison  
Health



Don Watson  
Not-for-Profit Organization

## Vacant Positions:

Vacant – Industry  
Vacant – First Nations

# OWC STAFF



Stephanie Palechek  
Executive Director



Leta Pezderic  
Program Coordinator



Bev Bellamy  
Administrative Assistant

[www.oldmanbasin.org](http://www.oldmanbasin.org)

## OWC ANNUAL GENERAL MEETING

The Oldman Watershed Council's 5th Annual General Meeting was a success! On April 30th 2009 the Oldman Watershed Council celebrated 5 years of Watershed Management! Over 100 people joined us in this celebration. We couldn't have asked for a better venue than the Galt Museum; our guests enjoyed looking out over the coulees at the Oldman River – the very reason we were all gathered!

The meeting began with the financial report followed by Team updates. We heard from the Communications and Outreach Team, the State of the Watershed Team, the Watershed Science Team (formerly known as the Data Collection and Integration Team), the Urban Team, and the Rural Team. An Election process was held in which Reed Davis was elected and Gerhardt Hartman was re-elected as Members at Large.

After dinner we heard from our inspiring keynote speaker, Kevin Van Tighem who reminded us that the stories we tell reflect the culture we live in and that these stories can affect the possibilities of our culture in respect to conservation and sustainability in the Oldman River watershed.

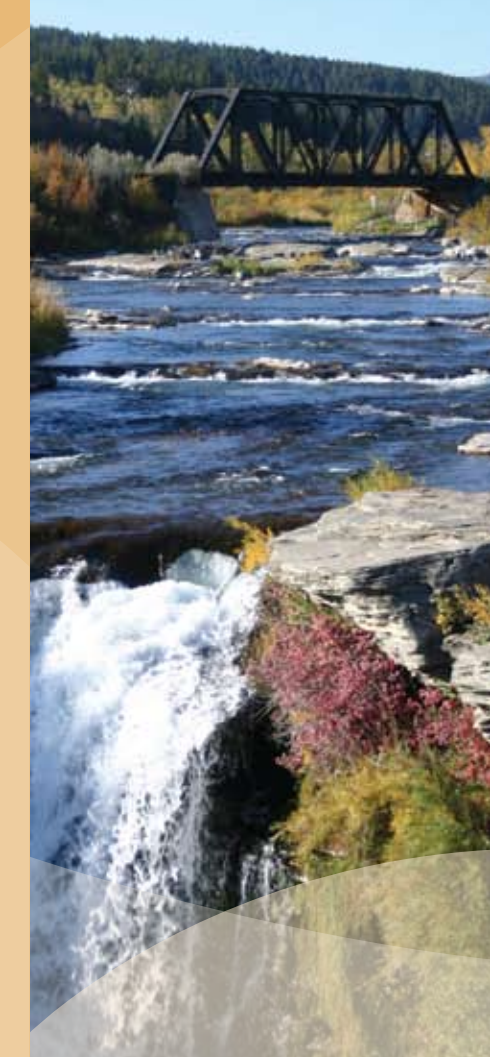
Throughout the evening, a silent auction as well as a raffle was held with the proceeds raised going to a Watershed Stewardship Group within the Oldman Basin. The winning Watershed Group was the Pekisko Group, taking home \$ 1749.00!!! We look forward to their report on what they decide to put the winnings towards!

Special thanks to our silent auction item donors, as well we would like to thank the financial and in-kind contributors of the Oldman Watershed Council's 5th Annual General Meeting.



# ANNUAL REPORT 08/09

[www.oldmanbasin.org](http://www.oldmanbasin.org)



## The Oldman Watershed Council (OWC)

is a not-for-profit organization that is working in partnership with communities and residents to improve the Oldman River Watershed. The Council consists of members who live or work within the Watershed. These members provide leadership and guidance in watershed planning and management, water quality monitoring, and stewardship promotion.

The Oldman River Watershed, located in Southwestern Alberta, extends north to High River, east to Grassy Lake, west to the Crowsnest Pass in the Rocky Mountains, and dips south across the 49th parallel into Glacier International Peace Park in Montana. Unlike many other basins the Oldman River Watershed, located in a semiarid ecosystem, is strongly dependent on its snow-fed headwaters for its annual flow. The main tributaries of the Oldman River are the Livingston, Crowsnest, Little Bow, Castle, Waterton, Belly and St. Mary's Rivers, which in turn are supplied upstream by numerous small streams, springs and wetlands. The Oldman River joins the Bow River to create the South Saskatchewan River upstream from Medicine Hat.

Our watershed is home to 161,400 rural and urban residents. There are about 70 small towns, villages and hamlets, as well as the City of Lethbridge. The watershed encompasses 28,000 km<sup>2</sup> and has an average population density of just less than 6 people per km<sup>2</sup>.

Land-use activities in the headwaters of the Oldman basin can have substantial impacts on the health of the entire watershed. The western portion of the watershed consists of

fescue grasslands while the central and eastern portions consist of dryer mixed grass areas and some native prairie vegetation. This same region is characterized by concentrated urban and industrial development, dry land farming and intensive livestock agriculture. About 33% of the watersheds' land cover is agricultural, 29% is forested and 17% is native grassland.

The Oldman Watershed Council integrates its activities through knowledge, research, partnerships and education as they relate to water management, water quality, and land-use practices in the following key areas:

By providing responsible information and input into watershed management planning activities that reflects the needs of stakeholders in the Oldman Watershed.

Increasing awareness and understanding of the Oldman Watershed among residents and stakeholders and encouraging commitment and responsibility to water quality and water use.

Refining and expanding knowledge of water-related conditions and processes throughout the Watershed.

Promoting sustainable land use practices that protect the Watershed.

Reducing contaminants, such as microbes, nutrients and pesticides that enter surface water and groundwater in the Oldman Watershed.

If you would like to find out more, contact us at:  
Oldman Watershed Council  
100, 5401 – 1 Ave. S., Lethbridge, AB T1J 4V6  
Phone (403) 382-4239 Fax: (403) 381-5765  
Email: [stephanie@oldmanbasin.org](mailto:stephanie@oldmanbasin.org)  
[www.oldmanbasin.org](http://www.oldmanbasin.org)

# Highlights of 2008-2009

## Watershed Science Team

Formerly the Data Collection and Integration Team (DC&I)

The Watershed Science Team is a working group of the Oldman Watershed Council (OWC) that is focused on watershed science related subjects in order to achieve the OWC goals.

The team facilitates discussion among agencies involved with research and monitoring on the aquatic environment (water quality, water quantity, etc.) and related land use activities in the basin. It promotes the diffusion of knowledge by sharing science results. The Watershed Science Team also provides opportunities for consultation and collaboration among different agencies working on water related issues in the basin.

### Science Forum

- The Watershed Science Team organized the OWC's first Science Forum. Theme of the forum was *Learning about our Watershed; Research at the University of Lethbridge and Lethbridge College*.
- The event was very well received and considered a large success with over 100 people attending.
- Excellent collaboration with the University of Lethbridge allowed us to offer free registration, parking and lunch for a total budget of only \$2780.
- We were fortunate to have a brilliant collection of speakers to present on their research from the Department of Biological Sciences and Geography of the University of Lethbridge and the Department of Environmental Sciences of Lethbridge College. As well we had a poster session during lunch. Speakers: Alice Hontela, Stefan Kienzle, Lars Brinkmann, Sarah Boon, Steve MacRae, Hester Jiskoot, Andy Hurlly, John Derksen, Stew Rood, Dan Johnson, Cam Goater.

### Name Change

The Watershed Science Team recently chose a new name to more accurately reflect their team. In the past they were called The Data Collection and Integration Team.

### Groundwater Vulnerability Report

The Team supported the development of a report prepared by LandWise Inc. on Groundwater Vulnerability in the Lower Little Bow and Battersea Drainage Basins of the Oldman Watershed.

### Water Quality Monitoring

Ongoing water quality monitoring work by Alberta Environment is being conducted in the Oldman River Basin.

## Communications and Outreach Team

The Communications and Outreach Team was formed to update the basin residents, partners, and members of the OWC's activities within the Basin by reviewing the Annual Report, the website, and quarterly newsletters to maintain consistency and coordination of Oldman Watershed Council messages and promotion.

### On-going Projects

The Communications and Outreach Team continue to work on projects including: the upkeep of the website, compiling the Annual Report and Quarterly Newsletters, and planning the Annual General Meeting.

### New Display

The OWC has designed a new display! We encourage you to come check it out at the many different events we will be attending throughout the year!

### Website

Our new website is being designed to make it more current and interactive.

## State of the Watershed Team

**Purpose:** To oversee the completion of a State of the Watershed Report of the Oldman Basin. The purpose of the Report is to gather information that will help us understand the current health of the Oldman River Watershed, to ensure collaborative and educated decision-making and to identify where future research is required.

### Highlights of 2008-2009

- Working with AMEC Earth and Environmental to establish the State of the Watershed Report.
- An indicators workshop was held on June 24, 2008. The purpose of the workshop was to establish what kind of environmental indicators should be used for the Oldman Watershed and what data was available. A report was submitted to the council containing the results of the workshop.
- Draft chapters of all the Sub-Regions were submitted early June. Sub-Regions include: Mountains; Foothills; Prairie; Southern Tributaries; and the Oldman River Mainstem.
- The draft report has been submitted to the Council for review.
- The OWC expects to release the completed report in early 2010. The report, along with factsheets summarizing each of the sub-regions, will be available in hard copy form as well as on the website.



## Rural Team

The Rural Team works directly with rural stakeholders in the Oldman Watershed by providing support to existing rural initiatives and building capacity among rural residents through team meetings and forums throughout the watershed. We provide financial support to rural watershed and landowner stewardship groups within the watershed to help support workshops on riparian weed control, coalbed methane, wind energy development and Best Management Practices.

### Blackfoot Challenge Tour

Mid August, 30 landowners, individuals from counties and municipalities, and members of the OWC Rural Team set out on a journey to Ovando, Montana to visit a watershed organization called the Blackfoot Challenge. The Blackfoot Challenge is a landowner-based group that coordinates management of the Blackfoot River, its tributaries, and adjacent lands. The Challenge has existed since 1993 and has had 15 years of experience working collaboratively to build trust, partnerships and a culture of working together to successfully solve problems that arise in their watershed. To date they have initiated projects in noxious weed management, protection of landscapes through conservation easements, stream restoration, water conservation, improved fisheries and wildlife habitat, and reduction of human and wildlife conflicts. During our visit, we were given the opportunity to learn about some of the projects that the Challenge has been involved in, some of the lessons that were learned, and how to effectively work together to achieve the common goal of a healthy, viable watershed.

### Holding the Reins

On February 3rd, 2009 the 3rd Annual Holding the Reins: Landowners Summit for the Oldman Watershed was held in Fort MacLeod with approximately 125 attendees. The summit provides landowners and other basin residents with an opportunity to hear about issues and initiatives in the Oldman basin.

### Watershed Legacy Program

The Watershed Legacy Program aims to provide the tools necessary for watershed stewardship groups and landowner cooperatives to take the next steps towards sustainable management of their land, operation, or more importantly the watersheds in which we all rely upon for our quality of life. These tools include funds for stewardship projects in one of 7 key areas as well as administrative, technical and communication assistance. This past year a great deal of planning and garnering support has taken place which will continue in 2009-10. A large fundraising effort is one of the next steps needed to take this program forward.



## Urban Team

The Urban Team promotes good practices for the home and yard because the river starts in our own backyards. Herbicides, fertilizers and other chemicals used in yards are showing up in our waterways, affecting aquatic life as well as downstream users. The Urban Team also promotes water conservation as we live in a semi-arid environment where water is scarce and drought is common. We have an opportunity to be leaders in demonstrating good water management.

### Prairie Urban Garden

The goal of the Prairie Urban Garden (PUG) project is to demonstrate the beauty and benefits of having a xeriscaped garden in Southern Alberta. Xeriscapes fit in with the dry prairie environment we depend on and allow homeowners to have beautiful yards. In the past year the PUG subcommittee has been working on developing a website, brochures, signs and hosted a tour in June of 2009. At the tour many homeowners profiled their yards and the tour had many participants interested in xeriscaping. The PUG project was also profiled at the 2009 Home and Garden Show in Lethbridge. Visit [www.prairieurbangarden.ca](http://www.prairieurbangarden.ca) for more information.

### Lethbridge Home and Garden Show 2009

The Urban Team organizes a booth at the Lethbridge Home and Garden Show every March, with a different topic each year. This past March the PUG project was the chosen topic and displays featured good gardening practices such as using less water and chemicals, composting, vermicomposting, using rain barrels and choosing native plants. There was a tremendous amount of interest in the topic and 72 people signed up for the PUG tour in June. Over 20 volunteers spent time at the booth, many from the Southern Alberta Group for the Environment and OWC. Thank you very much for your help!

### Yellow Fish Road

This program increases community awareness that storm water drains convey water directly into the Oldman River and aims to reduce the disposal of harmful substances into storm drains. In partnership with the City of Lethbridge and Trout Unlimited youth volunteers paint yellow fish symbols next to storm drains and distribute door hangers to nearby households. This reminds residents that anything on the street or dumped into storm drains ends up in their local water body. In the summer of 2008 approximately 312 storm drains were painted by 181 volunteers. This program will continue in 2009.

### Municipal Relations

The Urban Team provided input for the implementation of the 2006 municipal workshop to support City of Lethbridge Council environmental policy and plans. The Environmental Subcommittee of City Council was established in 2009 and the Urban Team assisted with water related initiatives (i.e. water conservation or stormwater quality) and provided input on the new drainage bylaw which was passed June 29, 2009. This bylaw applies to everyone and regulates what can and cannot be put into the stormwater system.

**SPECIAL THANKS**  
to all our volunteers  
who have worked so  
hard throughout  
the year!



## Visioning for the Integrated Watershed Management Plan Team

Last spring a small group of Oldman Watershed Council members met and began the visioning process for the integrated watershed management plan (VIWMP). The VIWMP will provide watershed residents with a set of qualitative outcomes guiding future activity and planning in the watershed.

Overall, the visioning plan is intended to:

- Provide a collective vision for the future function and appearance of the watershed.
- To build a foundation for future local scale planning processes.
- To build knowledge and understanding of watershed processes and implications of certain actions.
- Encourage all watershed residents to become invested in their watershed.
- Serve as a catalyst for proactive, voluntary action by land, water and resource managers.
- These broad scale 'vision' outcomes, combined with the information gathered in the State of the Watershed (SOW) report, and the Watershed Legacy Program (WLP) Gap Analysis, will prioritize future phases of watershed planning development.

### Project Objectives

The primary objectives of this project are to:

- Define a shared vision with all stakeholders for the Oldman Watershed.
- Set a framework for subsequent planning activities of the IWMP that aligns with the goals of Water for Life and the shared watershed vision.
- Build upon the knowledge base in our community.
- Identify real or perceived gaps (e.g. knowledge and activities) from the stakeholders in the watershed.

### Timeline and Process

There has been a considerable amount of prep work done already by the team and we are aiming for a December 2009 completion date. Selected individual interviews began in mid May and concluded in July. The draft report will be circulated to the stakeholder community in December for comment.