



water management – water health

PROPOSED WORKPLAN

2008-2009



TABLE OF CONTENTS

OUR MISSION	4
OUR GOALS.....	4
OUR GUIDING PRINCIPLES.....	5
ABOUT OUR WATERSHED	5
OUR WATERSHED APPROACH	5
THE STATE OF THE WATERSHED REPORT & THE INTEGRATED WATERSHED MANAGEMENT PLAN	6
2007/2008 HIGHLIGHTS	7
OWC STRUCTURE	8
OWC ORGANIZATIONAL CHART.....	10
ACTION PLAN 2008-2009	11
CONTACT INFORMATION.....	17
Board of Directors 2007/2008.....	17
Team Chairs 2007/2008	19
CONTRIBUTORS.....	20

OUR MISSION

To maintain and improve the Oldman River Watershed through partnerships, knowledge, and the implementation and integration of sustainable watershed management and land use practices.

OUR GOALS

The Oldman Watershed Council has developed a set of goals outlining an iterative process to understand, inform and engage residents in the watershed while seeking out and achieving key environmental outcomes.

The goals outlined speak to what the organization wishes to achieve in the long term. They describe a preferred future and a desirable change to the existing situation. The council intends that there be no further net negative impact from development, and watershed quality and functionality are maintained for the future. A healthy watershed benefits all of us. It is the key to a vibrant economy, enables society to maintain a high standard of living, and ensures a healthy aquatic ecosystem with good water quality, healthy riparian vegetation and fish habitat, healthy river flows, and functional wetlands and aquifers.

All residents in the watershed share their concern with the health of their watershed and are encouraged to discuss issues and share their input on what they would like to see happen in order to improve the watershed. This kind of participation allows residents to share and endorse, as well as take pride and ownership in creating a healthy functioning watershed. There are areas to improve upon in the watershed and it is agreed by most that a balance between economic development and environmental preservation is priority in management of the watershed.

Our five goals are:

1. We understand our watershed.
2. Residents are well informed and actively engaged.
3. Basin stakeholders have defined the desired outcomes for the Oldman Watershed that will form the basis for the Integrated Watershed Management Plan (IWMP).
4. The Oldman Watershed Council and stakeholders put into action the capacity and commitment to achieve defined outcomes.
5. Practices that are beneficial to the health and function of the watershed are adopted.

OUR GUIDING PRINCIPLES

- To encourage, engage, and work in partnerships with all stakeholders within the watershed.
- To involve Watershed Stewardship Groups and residents at the grassroots level to achieve practice change.
- To share information with Watershed residents and to be accountable to them.
- To respect all legitimate users and uses of the watershed.
- To respect jurisdictional mandates while providing information and advice to policy makers.
- To better understand the inter-relationships among all aspects of the watershed-water, land, air, ecosystems and human activities.

ABOUT OUR WATERSHED

The Oldman River Watershed, located in southwestern Alberta, extends north to High River, east to Grassy Lake, west to the Crowsnest Pass in the Rocky Mountains, and dips south across the 49th parallel into Glacier International Peace Park in Montana.

The Oldman watershed is located in a semi-arid ecosystem and is strongly dependent on its snow-fed headwaters for its annual flow. The main tributaries of the Oldman River are the Livingston, Crowsnest, Little Bow, Castle, Waterton, Belly, and St. Mary's Rivers. These tributaries are supplied upstream by the numerous small streams, springs, and wetlands. The Oldman River eventually joins the South Saskatchewan River upstream from Medicine Hat.

Our watershed is home to 242,400 rural and urban residents. There are about 70 small towns, villages, and hamlets, as well as the City of Lethbridge, population 81,692. The watershed encompasses 28000 km² and has an average population density of just less than 6 people per km².

The western portion of the Watershed consists of Fescue Grasslands while the central and eastern portions consist of dryer Mixed Grass areas and some native prairie vegetation. More concentrated urban and industrial development, dryland farming and intensive livestock agriculture characterize this same region. About 33% of the watershed's land cover is agriculture, 29% is forested and 17% is native vegetation.

OUR WATERSHED APPROACH

Water is essential for life. Humans and other living organisms must have a reliable supply of good clean water to survive and maintain healthy aquatic ecosystems. Within the Oldman watershed, activities related to recreation, resource extraction, urban development and agriculture continue to put strain on both the quality and the quantity of our water resources. Much of our water resources are stressed and highly allocated. We need to continue to strive for a better understanding of aquatic ecosystems, water supply and watershed interactions so

that we can provide a solid foundation to make effective decisions. Citizens, communities, industry and government all share responsibility for watershed management and by working together we can protect and improve the conditions within the Oldman Watershed.

We, as basin residents, need to continue our efforts and actions. The Oldman Watershed Council will encourage Oldman River Watershed residents and stakeholders to recognize that water is a limited resource and that this limited resource needs to be shared. The Council will continue to work to place water management and watershed health on everyone's agenda by encouraging people to accept personal responsibility for healthy aquatic environments and to use beneficial management practices to protect our water supply. Our priorities will include the following:

- Increase understanding of land use and its effect on the watershed and the aquatic ecosystem.
- Continue to provide support and knowledge for local watershed groups to improve the conditions of the local watershed.
- Establish a water conservation strategy for the Oldman Watershed.
- Educated residents on the watershed and the dynamics affecting it.
- Research and demonstrate beneficial management practices and their effect on watershed health.
- Examine and review water and watershed management planning priorities.
- Prepare and present a comprehensive document on the State of the Watershed.
- Continue to build and maintain strong relationships with stakeholders and residents in the watershed and be accountable to them.
- Provide the opportunity through outreach, education and public involvement to empower citizens and implement practice change.
- Increase knowledge of surface and groundwater vulnerability.

The Oldman Watershed Council will continue to work towards the protection, promotion, and research of healthy watersheds. In order to maintain and strengthen partnerships with stakeholders in the watershed, it is of utmost importance to have an open book policy and provide a balanced view of all issues. The council will provide options, identify alternatives and make recommendations, where needed, based on input from stakeholders, so that the Government of Alberta can make informed decisions on legislated issues.

THE STATE OF THE WATERSHED REPORT & THE INTEGRATED WATERSHED MANAGEMENT PLAN

We are continuing to work on the production of our State of the Watershed Report, and expect completion in the fall of 2008. The results of the State of the Watershed will provide citizens with a snapshot of what is happening in the watershed on a high level of understanding. The outcomes of the SOW are:

- An indicator evaluation workshop was held to finalized list of indicators in April, 2007.
- Information was reviewed and the ProCite Database updated at the end of June, 2007.
- A draft sub-basin section will be submitted for review.
- Draft report will be submitted and presented to the OWC in September 2008.
- The final report and supporting deliverables will be delivered in September 2008.

Our next task will be to begin an Integrated Watershed Management Plan. Visioning for this plan had already begun, and during this next fiscal year, we will be organizing public outreach to introduce the concept of the watershed planning and the role of the community. This will also contribute to further issue identification and priority setting for the Oldman watershed. It's going to be a very exciting and active planning year.

2007/2008 HIGHLIGHTS

This past year, through partnership with volunteers and community teams, the Council achieved the following goals.

Stakeholders meeting held in Cardston on September 12, 2007 – GOALS 1, 2, 4 & 5

- We heard from a number of local watershed groups and took part in a tour of one of Alberta Environment's sampling sites which form part of the small community water quality sampling program. We also had the opportunity to tour Cardston's Water and Waste Water Treatment Plants, and finished up with a tour of a bio-control site, which uses a species of beetle to attack Hounds Tongue weed.

First annual Rural Workshop titled "Holding the Reins" January 2008 – GOALS 1, 2, 4 & 5

- This workshop brought together landowners, agencies, and industry to discuss issues and concerns that are taking place on rural land in the basin. Watershed and land use groups made presentations on some of the projects that they had accomplished. We were also fortunate to have the Blackfoot Challenge from Ovando, Montana present some of the successes that they've experienced with their group, as well as to have Silvatech Consulting present the results of the Chief Mountain Cumulative Land Use Effects study.

Annual General Meeting in Lethbridge, March 12, 2008 – GOALS 1 & 2

- Our AGM will begin with a series of concurrent sessions, comprised of six speakers who will present on research, industry, and policy related topics. We will also provide an opportunity for watershed members to engage in discussions with a panel of speakers. Students, within the watershed, between grades 6-8 have been asked to participate in an essay contest titled "Making a Difference in Your Watershed". The top essays will be picked and winners will be presented with prizes at this event. Some of the students who participated in the contest will have the opportunity to spend time with our keynote speaker, Simon Jackson; founder of the Youth Spirit Bear Coalition.

State of the Watershed and Integrated Watershed Management Plan – GOALS 1 & 3

- We will continue to work on the State of the Watershed Report. The projection for the final deliverable is September of 2008.
- We will be working towards the first phase of the Integrated Watershed Management Plan. Some of the activities will involve community outreach, priority setting and some initial planning.

Monitoring – GOAL 1

- Surface water quality monitoring has been ongoing monthly at the three Long Term River Network (LTRN) site stations (Oldman River near Brocket, at Hwy 3 and at Hwy 36). Many years of data have now been collected at these three sites and this work allows us to monitor for trends and supply data. Other work includes monthly monitoring on various sites in the Little Bow River, upstream and downstream of the Twin Valley Reservoir. Monitoring is continuing along Willow Creek and Pine Coulee Reservoir. Other monitoring activities included the installation of temperature data loggers in the Southern Tributaries, the Castle, Crowsnest and the Upper Oldman Rivers. Real-time temperature data (reported via satellite connection) was recorded at one site each in the upper Oldman and Crowsnest rivers and in Pincher Creek. Sampling for waterborne pathogens was carried out (biweekly in open water season) at nine Oldman River and tributary sites, including 2 Little Bow River sites. A draft report is expected in December of 2008. Additionally, the OWC is working in conjunction with Livio Fent, of Sustainable Resource Development, to complete a groundwater mapping vulnerability study in the basin.

Annual Report – GOALS 2 & 4

- The 2007-2008 Annual Report will be completed in May of 2008. The report will include team updates, a list of our Board of Directors, articles of interest -including projects supported by the OWC, a list of our contributors, and a map summarizing water quality data throughout the basin.

OWC STRUCTURE

The following details the structure of the Oldman Watershed Council

Board of Directors

- A balanced representation of stakeholders throughout the basin.
- There are places for seventeen members within the Board of Directors with a maximum of two members representing: NGO's, provincial government, municipalities; and one member representing: federal government, industry, irrigators, academia, and first nations. There are four members at large who will be voted in biannually.
- Members will participate in a 2-year term with a possibility of more than one consecutive term and will be elected at the annual general meeting.
- Board members must reside within the basin, provide substantial commitment and actively participate in the Council.
- The Board of Directors will appoint Working Team Chairs and identify key members for the active working teams.

Team Chairs

- Will consist of the Working Team Chairs from the proposed/active groups.
- Meetings will be facilitated by the Oldman Watershed Council Executive Director who will report to the Board of Directors.

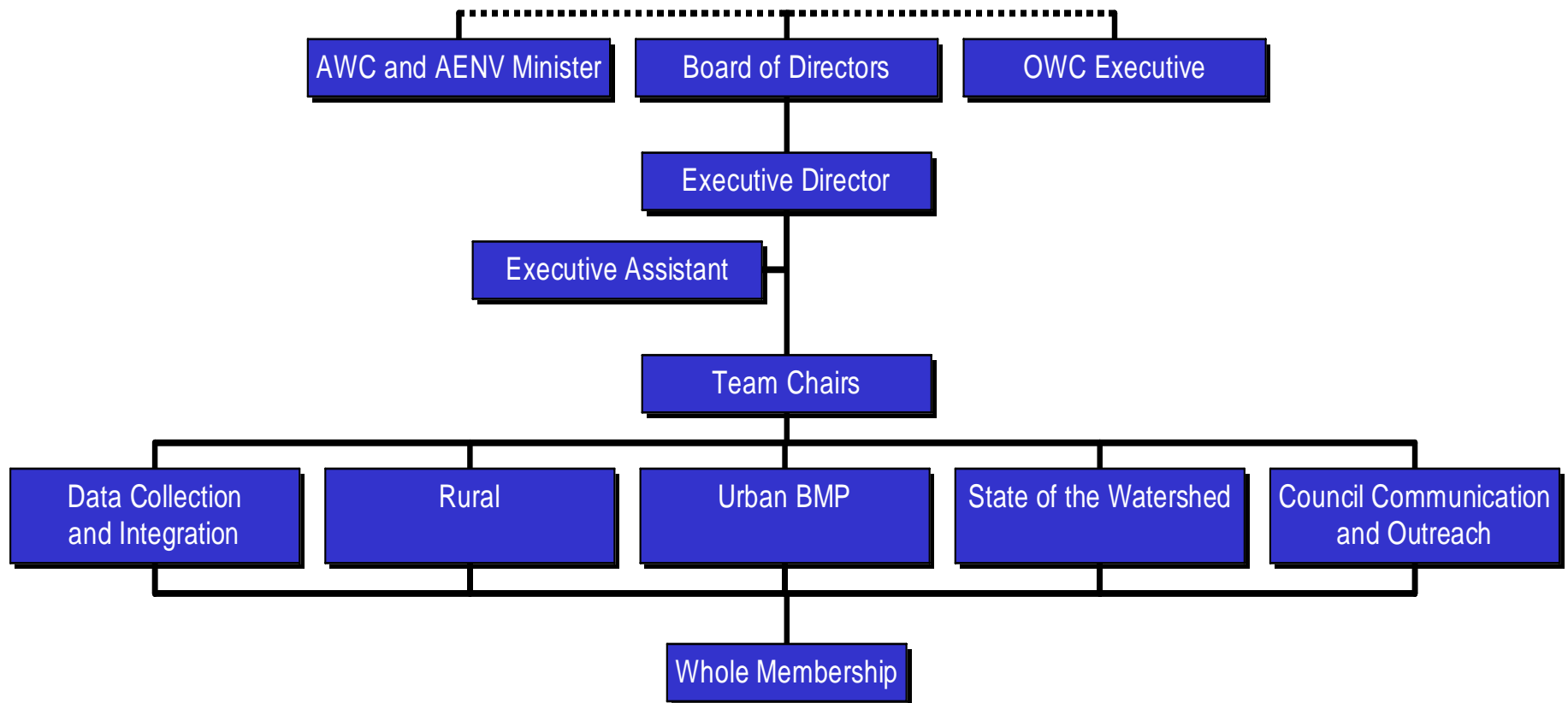
Working Teams

- Teams will be made up of representatives from the whole membership.
- Teams will be formed as needed and will be dissolved when their mandate/project is completed.
- The current teams are as follows:
 - Council C&O – Council Communication and Outreach
 - DC&I – Data Collection and Integration
 - Rural – Rural
 - Urban BMP –Urban Beneficial Management Practices
 - SOW – State of the Watershed

Whole Membership

- Every person that lives or works within the Oldman Watershed will be welcomed and encouraged to participate.
- Members are expected to contribute money, property and/or in-kind services to the Society.
- The Board of Directors may set annual membership fees for each category of membership in the Society.
- A membership list will be maintained and kept up to date.

OWC ORGANIZATIONAL CHART



ACTION PLAN 2008-2009

In order to meet the goals outlined by the OWC, ongoing communication must take place between the Board, the Executive Director, the Executive Assistant, and the Working Teams. Projects undertaken by teams should be in configuration with the goals and strategies stated in this document, and where appropriate coordinated with other teams or initiatives to help accomplish the objectives.

The table below outlines specific projects and indicates which goal is being achieved by that activity.

Project Name	Objectives	Goal	Operational	Project	Start Date	End Date	Cash	In-Kind
Meetings Presentations and Workshops								
Annual General Meeting	To update watershed residents on current activities within the watershed, to discuss future plans, and to elect Directors.	2,4	✓		September 2008	March 2009	\$3000.00	\$1000.00
Stakeholders Meeting	To update watershed residents on current activities and future plans within the basin. Tour sites in the basin with stakeholders.	2,4	✓		April 2008	October 2008	\$4000.00	\$500.00
Holding the Reins Summit	To gather landowners, agencies and industry in the watershed to exchange information and to hear important topics of the day.	1,2,3	✓		April 2008	February 2009	\$6000.00	\$6000.00
Facilitate 3 meetings	Facilitate 3 meetings, one with all landowner groups, one with industry, and one with recreational users to help bridge gaps and provide an avenue for sharing resources and information.	1,2	✓		March 2008	March 2009	\$600.00 (\$200.00 each)	\$3000.00
Sponsor Rural	Sponsor regional 1-day	2,5	✓		April 2008	March 2009	\$2000.00	\$1000.00

Project Name	Objectives	Goal	Operational	Project	Start Date	End Date	Cash	In-Kind
Initiatives workshops	workshops on rural issues identified by local landowners, watershed groups and rural initiatives that relate to OWC goals (water quality, coalbed methane, oil and gas, grazing seminars, reclamation). Maximum sponsor \$200 per workshop. AESA technicians will be responsible for identifying workshops to be sponsored on a first come, fist serve basis.							
Collaborate with 2 AESA municipal tours	Collaborate with a single existing AESA rural tour. OWC members will have the opportunity to learn and understand the municipal issues and projects (via bus tour).	2,3,5	✓		April 2008	November 2009	\$2000.00	\$1200.00
Community Outreach and Visioning	Issue identification and prioritization of council activities and direction	1, 2, 3	✓		April 2008	March 2009	\$60,000.00	\$25,000
Community Ownership								
Support Alberta Environmental Farm Plans	Support EFP workshops in the Oldman Watershed (6 workshops at \$200.00 each).	1,2,3	✓		April 2008	March 2009	\$1200.00	
Great Garden Search	Continue to search out and profile water friendly gardens and yards within the city of Lethbridge.	2,3,5	✓		April 2008	October 2008	\$2000.00	\$2000.000
Yellow fish road program	Would partner with Guides/Scouts groups, 4H groups, or school clubs, to paint yellow fish on storm drains. Prizes for	2,4	✓		May 2008	September 2009	\$1500.00	\$1500.00

Project Name	Objectives	Goal	Operational	Project	Start Date	End Date	Cash	In-Kind
	completion (e.i. Pool pass).							
Water wise Garden	Continued collaboration with school staff on garden project.	2	✓		May 2008	September 2009		\$500.00
Educational Opportunities								
Display at home and Garden Show	Create a display aimed at homeowners to provide information on stormwater system function, promote water conservation and link water quality to lawn and garden practices.	2,4	✓		April 2008		\$1000.00	\$1000.00
OWC Poster	Introduce and promote the OWC.	2,4		✓	April 2008	March 2009	\$5000.000	\$3000.00
River Watch Essay Contest	Promote watershed awareness for youth in the Oldman Watershed.	2,4		✓	April 2008	March 2009		\$500.00
Educational video	Produce a video aimed at a younger audience, which profiles the importance of water and responsible water use.	2,4		✓	April 2008	March 2009	\$5000.00	\$5000.00
Technical Resources								
Stormwater monitoring	Contribute to the pesticide analyses cost.	1,5	✓		April 2008	March 2009	\$3000.00	\$12,000.00
Summer Student	A summer student would be hired on with the City of Lethbridge in which the OWC would receive 20% of the student's time and the city would receive 80%	1,3,4	✓					
Groundwater Vulnerability study in Southern Alberta	Refine and produce deliverables to the OWC regarding surface and groundwater vulnerability mapping.	1		✓	April 2008	March 2009	\$10,000.00	\$3000.00
Providing technical support to stakeholders	Providing technical and data support to stakeholders and Working Teams.	2,5	✓		ongoing			

Project Name	Objectives	Goal	Operational	Project	Start Date	End Date	Cash	In-Kind
Applied Research								
Lower Little Bow and Battersea BMP evaluation	Assess water quality in order to evaluate effectiveness of agricultural beneficial management practices and production of a fact sheet.	1,5	✓		ongoing			\$24,000.00
Southern Rockies Watershed Project.	Continue to work with Uldis Silins on SRWP.	1,5		✓	April 2008	March 2009		\$5000.00
Ecological Risk Assessment Index	Meeting with OWC to select members to explore the feasibility of developing an Ecological Risk Assessment Index.	1,5		✓	April 2008	September 2008	\$400.00	\$1600.00
AENV Water Quality Monitoring	Monitor water quality parameters, including water chemistry, temperature, algae, macrophytes, and pathogens on the Oldman River mainstem, various tributaries, lakes, and reservoirs within the watershed.	1	✓		Ongoing			\$200,000.00
Reports and Publications								
Annual Report	To update basin residents, partners and members of activities within the basin.	2,4	✓		April 2008	March 2009	\$6000.00	\$2000.00
State of the Watershed Report	To assist with the distribution of the State of the Watershed report, and to publish SOW fact sheets.	2,4		✓	August 2008	March 2009	\$80,000.00	\$50,000.00
Integrated Watershed Management Plan	Design and develop outreach materials.	1, 2, 3		✓	April 2008	March 2009	\$20,000.00	\$50,000.00
OWC brochures	To introduce and promote the Council.	2,4		✓	April 2008	March 2009	\$5000.00	\$3000.00
Rural Team	Create a brochure that will	2		✓	January 2008	March 2009	\$1500.00	\$3000.00

Project Name	Objectives	Goal	Operational	Project	Start Date	End Date	Cash	In-Kind
brochure	include information on the Rural Team, the members and their organizations belonging to the team. This will be available to landowners and anyone with interest in the team.							
General Awareness Campaign								
Quarterly Newsletters	To communicate Council and watershed activities with the membership.	2,4	✓		Ongoing		\$500.00	
Website	To update watershed residents, partners and members on activities within the basin.	2,4	✓		Ongoing		\$2000.00	
Promotional Items	To promote the Council outside the scope of our usual communication tools.	2,4	✓		Ongoing		\$10,000.00	
Highway Sign Project	Partner with local watershed groups and/or ATV groups to design and erect a sign on a major highway, alerting motorists and recreational users of the OWC and the importance of water protection.	2,4,5		✓	April 2008	March 2009	\$11,000.00	\$5000.00
Watershed Boundary Signs	Investigate watershed boundary signs and look into partnerships with other WPAC's in the province.	2,4		✓	April 2008	March 2009		\$3000.00
Eco Home	Partner with LCC and the City of Lethbridge with an eco home they may be building by assisting/consulting on Landscaping.	2,4,5		✓	April 2008	March 2009	\$5000.00	\$60,000.00
Administration								
Executive Director	Coordination of Council work and direction		✓		April 2008	March 2009	\$60,000.00	

Project Name	Objectives	Goal	Operational	Project	Start Date	End Date	Cash	In-Kind
Executive Assistant	Assist Executive Director.		✓		April 2008	March 2009	\$40,000.00	
Training and Development	Provide an opportunity for staff to gain skills and knowledge to help meet Council's objectives.		✓		April 2008	March 2009	\$5000.00	
Board of Directors Meetings	Providing an opportunity for watershed residents to meet Board members. Meetings will be held outside of the City of Lethbridge.		✓		April 2008	March 2009	\$5000.00	\$10,000.00
Board of Directors Discretionary Projects	Provide Board members an opportunity to support projects that have not been previously identified in the workplan.		✓		April 2008	March 2009	\$10,000.00	
Insurance	Purchase of Directors liability insurance.		✓		September 2008		\$1800.00	
Audit	Have the finances professionally audited.		✓		April 2008		\$2500.00	
TOTALS							\$372,000.00	\$482,800.00

CONTACT INFORMATION

Board of Directors 2007/2008



Name	Organization	Mailing Address	Telephone	Fax	Email
Brian Hammond	MD of Pincher Creek	Box 279 Pincher Creek, AB T0K 1W0	W: (403) 627-3130 H: (403) 627-4994	(403) 627-5070	bhammond@mdpincercreek.ab.ca
Brent Paterson	Alberta Agriculture and Food	100, 5401 – 1 Avenue South Lethbridge, AB T1J 4V6	(403) 381-5143	(403) 381-5903	brent.paterson@gov.ab.ca
Cheryl Fujikawa	Southern Alberta Environmental Group	1605 – Lakeshore Road South Lethbridge, AB T1J 3E9	(403) 327-6605		
Don Watson	Ducks Unlimited Canada	103 Ermineglen Bay N Lethbridge, AB T1H 6G4	(403) 328-3529	(403) 320-0849	d_watson@ducks.ca
Andrew Hurly	University of Lethbridge	4401 University Drive Lethbridge, AB T1K 3M4	(403) 329-2320		hurly@uleth.ca
Ron Renwick	St. Mary River Irrigation District	Box 278 Lethbridge, AB T1J 3Y7	(403) 328-4401	(403) 328-4460	rrenwick@smrid.ca
Shane Petry	Fisheries and Oceans Canada	204, 704 – 4 Ave S Lethbridge, AB T1J 0N8	(403) 394-2926	(403) 394-2917	petrys@dfo-mpo.gc.ca
Cheryl Dash	Alberta Environment	200 – 5 Ave S Lethbridge, AB T1J 4L1	(403) 381-5562	(403) 382-4428	Cheryl.Dash@gov.ab.ca

Name	Organization	Mailing Address	Telephone	Fax	Email
Barbara Lacey	City of Lethbridge	City Hall 910-4 th Ave S Lethbridge, AB T1J 0P6	W: (403) 627-3130 H: (403) 627-4994	(403) 627-5070	blacey@shaw.ca
Sean Robison	Chinook Health Region	1009 24th Ave Coaldale, AB T1M 1N5 Box 90	(403) 345-3000	(403) 328-2043	srobison@chr.ab.ca
Bruce Konynebelt	Alberta Pork Producers	Nobleford, AB T0L 1S0	(403) 824-3431	(403) 824-3258	kbeltfam@allstream.net
Duane Climenhaga		79 Columbia Blvd. W. Lethbridge, AB T1K 4B7	(403) 381-8980		dclimenhaga@telusplanet.net
Gerhardt Hartman		2401 10 St. Coaldale, AB T1M 1N5	(403) 345-4027		Chair@oldmanbasin.org
Keith Francis		4822 - 51 Avenue Taber, AB T1G 1H1	(403) 223-3302	(403) 223-0189	
Lorne Fitch		625 - 18 Street S Lethbridge, AB T1J 3E9	(403) 328-1245		lafitch@shaw.ca
Stephanie Palechek (Executive Director)	OWC	100, 5401 – 1 Ave S. Lethbridge, AB T1J 4V6	(403) 382-4239	(403) 381-5765	stephanie@oldmanbasin.org
Leda Kozak (Executive Assistant)	OWC	100, 5401 – 1 Ave S. Lethbridge, AB T1J 4V6	(403) 381-5801	(403) 381-5765	leda@oldmanbasin.org

Team Chairs 2007/2008

Name	Organization	Mailing Address	Telephone	Fax	Email
Andrea Kalischuk Rural Team Co-Chair	Alberta Agriculture and Food	100,5401-1 st Ave. S Lethbridge, AB T1J 4V6	(403)381-5195	(403)381-5765	andrea.kalischuk@gov.ab.ca
Jamie Puchinger Rural Team Co-Chair	Partners in Habitat Develop	Box 278 Lethbridge, AB T1J 3Y7	(403) 328-4401 ext. 310	(403) 328-4460	jpuchinger@smrid.ab.ca
Wendell Koning Data Collection and Integration Co-Chair	Alberta Environment	3 rd floor Deerfoot Square 2938-11 Street N.E Calgary, AB T2E 7L7	(403) 297-8267	(403) 297-6069	Wendell.koning@gov.ab.ca
Brad Taylor Data Collection and Integration Co-Chair	Alberta Conservation Association	Box 1139 Blairmore, AB T0K 0E0	(403) 562-3288	(403) 562-3270	Brad.taylor@gov.ab.ca
Vic Brown Communications and Outreach	AAFC-PFRA	704 4th Ave. S Lethbridge, AB T1J 0N8	(403) 382-3145	(403) 382-3198	brownv@agr.gc.ca
John Byrne Urban Team Co-Chair	Chinook Health	801-1 st Ave S. Lethbridge, AB T1J 4L5	(403) 388-6991	(403) 328-5934	Jbyrne2@chr.ab.ca
Doug Kaupp Urban Team Co-Chair	City of Lethbridge	910-4 th Ave S Lethbridge, AB T1J 0P6	(403) 320-3078	(403) 329-4657	dkaupp@lethbridge.ca
Jocelyne Leger SOW Team Co-Chair	Alberta Sustainable Resource Development	200-5 th Ave S Lethbridge, AB T1J 4L1	(403) 388-3132	(403)-381-5969	Jocelyne.leger@gov.ab.ca
Shane Petry SOW Team Co-Chair	Fisheries and Oceans Canada	204, 704-4 Ave S Lethbridge, AB T1J 0N8	(403) 394-2926	(403) 394-2917	petrys@dfo-mpo.gc.ca

CONTRIBUTORS

In-Kind Contributions for 2006 – 2007

Organization	Amount
Agriculture and Agri-Food Canada - PFRA	\$ 4,225.00
Alberta Agriculture and Food	\$ 61,785.00
Alberta Conservation Association	\$ 2,800.00
Alberta Environment	\$ 39,880.00
Alberta Environmental Farm Plan	\$ 3,150.00
Alberta Ingenuity Centre for Water Research	\$ 525.00
Alberta Pork Producers	\$ 875.00
Alberta Sustainable Resource Development	\$ 4,500.00
Cardston County	\$ 287.50
Chinook Health	\$ 6,118.75
City of Lethbridge	\$ 2,700.00
County of Lethbridge	\$ 2,450.00
Cows and Fish	\$ 3,150.00
Ducks Unlimited Canada	\$ 4,450.00
Fisheries and Oceans Canada	\$ 6,007.50
Lethbridge College	\$ 200.00
Lethbridge College/Red Crow Training Project	\$ 5,370.00
MD of Pincher Creek	\$ 2,225.00
Individual	\$ 7,470.00
Partners in Habitat Development	\$ 105.00
Piikani Public Works	\$ 437.00
Rogers Sugar	\$ 315.00
Southern Alberta Group for the Environment	\$ 8,690.00
St. Mary River Irrigation District	\$ 1,800.00
Taber Irrigation District	\$ 2,600.00
University of Lethbridge	\$ 4,500.00

Contributions for 2008 – 2009 (as of February 1, 2008)

Organization	Amount
Alberta Irrigation Projects Association	\$500.00
Ron Winter (Individual Public)	\$50.00
Farm Credit Canada (Rural T. Workshop)	\$200.00
Kairos Lethbridge	\$50.00
Town of Vauxhall	\$320.00
Town of Claresholm	\$1,110.00
Vulcan County	\$1,200.00
Town of Picture Butte	\$477.60
Magrath Irrigation District	\$200.00
Municipal District of Willow Creek No. 26	\$1,601.03
Municipal District of Pincher Creek No. 9	\$992.70
Raymond Irrigation District	\$1,234.68
LeRon Torrie Farms Ltd.	\$50.00
Town of Coaldale	\$1,853.10
Taber Irrigation District	\$2,302.95
MD of Ranchland No. 66	\$250.00
Ducks Unlimited Canada (AGM)	\$500.00
UMA (Rural Team)	\$350.00
Douglas Amy (Individual Public)	\$100.00